

# GATEWAY TO TRADE

## PORT OF PIETARSAARI / JAKOBSTAD



**PORT OF**  
JAKOBSTAD  PIETARSAARI

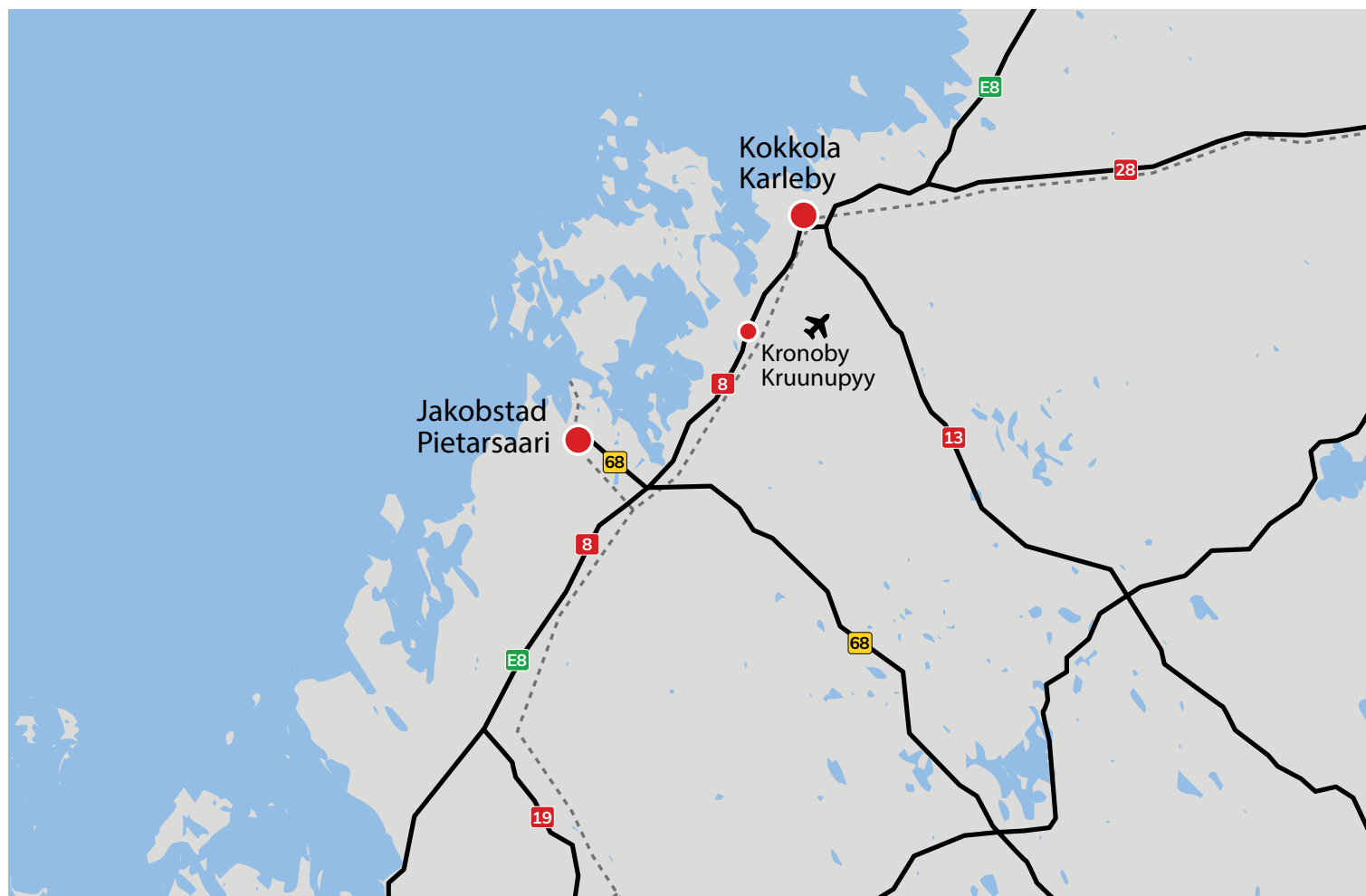
# 2 CONTENTS

About the Port	3
Harbour Services	4-6
Environment	7
Safety & Quality	8
Technical Information	9
Location	10
Contact information	11

## PORT OF PIETARSAARI / JAKOBSTAD LTD

Alholmintie 76  
FI 68600 PIETARSAARI-JAKOBSTAD  
FINLAND

Tel. +358 6 723 6128  
[www.portofpietarsaari.fi](http://www.portofpietarsaari.fi)  
[www.portofjakobstad.fi](http://www.portofjakobstad.fi)





## YOUR GATEWAY TO INTERNATIONAL TRADE

Trade and shipping were the original reasons for the founding of the town of Pietarsaari/Jakobstad. The first Finnish ship to sail around the world from 1844–1847 was the bark ship *Herkules* out of Pietarsaari/Jakobstad.

The port in 1952



A lot has happened since then. The harbour infrastructure has developed rapidly together with various industries in the Pietarsaari/Jakobstad region that needed the port for their exports and imports. It is not by chance that UPM, Pietarsaari Mills – currently one of Europe's biggest pulp mills – and Alholmens Kraft – the world's biggest bio-fuelled power plant – are located just a stone's throw from the port.

Together with the port operator, Euroports Pietarsaari Oy Ab, the port is one of the most efficient in the world that deals with wood-processing industry products.

### KEY FEATURES

- One of Europe's largest pulp mills relies on Port of Pietarsaari/Jakobstad
- The world's biggest bio-fuelled power plants uses our services
- Specialised in handling pulp, sawn timber, paper, chemicals and mixed goods



## 4 HARBOUR SERVICES



### MOVING MORE OF YOUR CARGO WITH IMPROVED INFRASTRUCTURE

During the last 10 years the Port of Pietarsaari/Jakobstad has invested in port infrastructure with the emphasis on our customers. We have achieved a port that is able to compete successfully on the sea-born transport market, both now and especially in the future.

Ships are increasing in size all the time and for several reasons and international rules and regulations such as the Sulphur regulation mean that the port must invest in capacity to handle larger ships.

We have developed the port one step at a time. In 2009, the most recent extension of our deep quay, the Laukko quay with a total length of 500 metres, was ready for use. The next step was a deeper channel and deeper harbour basin. From 2011–2015 a large dredging project took place.

In late autumn 2015 the channel to the port of Pietarsaari/Jakobstad was authorised by the Finnish Transport Agency to build the new 11-metre draft. The new draft makes it possible for ships to carry about 90 percent more cargo in a more ecological way compared to our earlier 9-metre channel. This means increased turnaround for our customers.

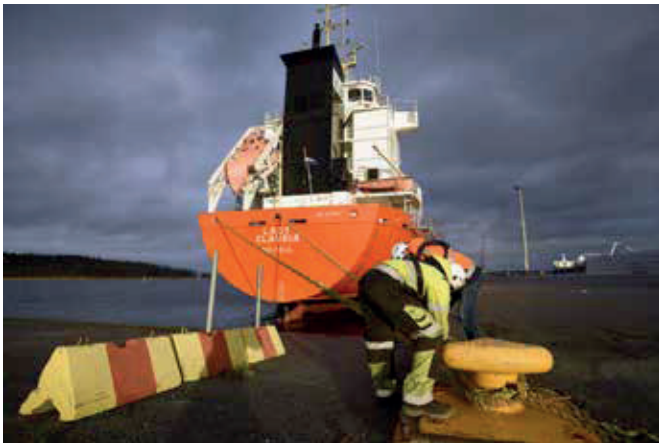
In 2016–2019, investments have been made to improve the capacity for holding stock in the area by constructing two new 4000 m<sup>2</sup> warehouses and 18000 m<sup>2</sup> storage area. In 2020 strengthening of Buskö and Laukko I quays. New storage areas, 16000 m<sup>2</sup> and 28000 m<sup>2</sup>, were constructed in 2021 and 2022.

#### KEY FEATURES

- 11-metre draft = 90% more freight volume / ship
- Expanded quay capacity
- 6 quays, total length of about 1 km



## PORT INFRASTRUCTURE – OUR STRENGTH



Special transport route from the port to Finnish national road 8, fills the demanding needs for special transports. The development of the logistics network around the Port of Pietarsaari/Jakobstad include electrification of the railway and building a third, triangular junction from the mainline to the port. In addition, the road to the industrial area nearby and the port has been rebuilt. The access road is now safer and can carry heavier cargoes.

In a logistics chain, a port is often the hub. Goods from far and near pass through the port towards their final destinations. An effective port must therefore have good accessibility to create a flow of goods. For this reason, the Port of Pietarsaari/Jakobstad with its expanded quay capacity and new draft is now competitive and ready to meet all your new challenges.

### KEY FEATURES

- Electrified railway line to the port
- Improved access road – safer, heavier cargo.
- Special transport route to Finnish national road 8





## PORT SERVICES

The competition between ports is tough. The strengths of the port of Pietarsaari/Jakobstad are our staff, the infrastructure and the business environment that surrounds us.

Besides handling goods we also provide storage space mostly for the forest industry. The port service for ships is available 24/7/365. The port operator of Pietarsaari/Jakobstad is Euroports Pietarsaari Oy Ab, who are responsible for the day-to-day loading and unloading and stocking. They provide stevedoring, forwarding, ship clearance, chartering and agency services for national and international companies.

Euroports Pietarsaari serves shipping companies, freight agents, goods owners, forwarding agents, transport companies and handles connections to customs, pilots and authorities.

Efficient cargo-handling is enabled by modern equipment such as Mantsinen hydraulic mobile harbour cranes, Gottwald mobile harbour cranes, container cranes, container handler and a complete range of forklifts up to 16 tons.

Oy Kraftline Ab also provide towing, forwarding, ship clearance, chartering and agency services.

The proximity of UPM Pietarsaari mills to the harbour affords many logistic advantages for export operations. The pulp, for instance, is conveyed directly from production line to port for warehousing and loading purposes. Transport tonnage is at the same time used efficiently: import and export products are carried on the same vessels.

The port operations within Euroports Pietarsaari have been certified and the tools for continuous improvement are provided by the following standards: Quality Management System ISO 9001, Environmental Management System ISO 14001 and Health and Safety System ISO 45001.

Efficiency, flexibility and punctuality will also in the future be the keywords for improving services to customers.

### KEY FEATURES

- Staff and infrastructure
- Business environment
- Port service 24/7/365
- Stevedoring
- Warehousing



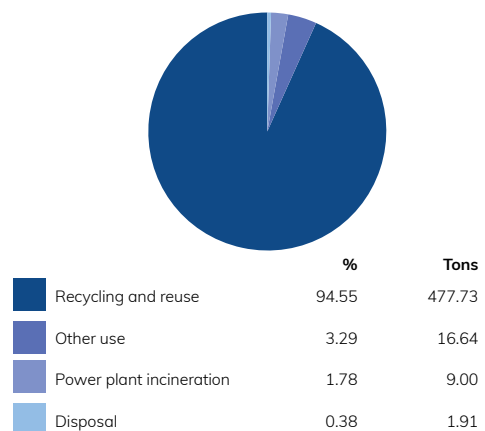
## ENVIRONMENTALLY RESPONSIBLE AND SUSTAINABLE

The Port of Pietarsaari/Jakobstad has received ISO 14001 certification from accredited certification body DNV GL. ISO 14001 is the most widely recognised international standard for environmental systems. This provides the Port of Pietarsaari/Jakobstad with a framework for identifying and controlling its environmental impacts. Increased awareness of sustainable development gives the Port of Pietarsaari a competitive edge in national and international markets. ISO 14001 also provides clear operational standards to reduce environmental impacts and ensure that legal requirements are fulfilled.

The Port of Pietarsaari/Jakobstad handles recognised important environmental issues in a structured and systematic manner to achieve continuous improvements and reduced environmental impact. The Port of Pietarsaari/Jakobstad encourages the reduction of ship emissions by pricing. The port contributes to the environmental work of all parties that operate in the port area and takes responsibility for the environmental education of personnel.



### WASTE DISTRIBUTION



The Port of Pietarsaari/Jakobstad has set concrete and realistic targets, and estimates their realization.

The port annually conducts an environmental report. The environmental work of the port focuses on reducing air emissions, high rate of waste recycling, energy efficient operations and noise reduction. The Port of Pietarsaari/Jakobstad has also used recycled or reclaimed materials in port construction projects. During the past few years dredged material has formed hectares of a new port field.

### KEY FEATURES

- Safe handling of dangerous substances and chemicals,
- Limiting emissions
- Sustainable development
- Discount system for low-emission ships
- Waste management

## 8 SAFETY & QUALITY



## SAFETY & QUALITY

The Port of Pietarsaari/Jakobstad applies the international ISPS, International Ship and Port Facility Security code. Access to the port area requires an access pass and advance notification.

ISO 9001 certification is the most recognised international quality management standard. ISO 9001 provides specific requirements for a quality management system to enhance the port's ability to consistently deliver services that meet customer as well as statutory and regulatory requirements. Health and safety at work affects all businesses.

The Port of Pietarsaari/Jakobstad has ISO 45001 international standard for occupational health and safety management certification. This is an effective way to reduce risks related to potential health and safety incidents at the port. It demonstrates the port's responsibility towards employees and ensures regulatory compliance.

The ISO 45001, ISO 14001 and ISO 9001 certificates are designed to be compatible and harmonised to form an international management system for the entire operations of the Port of Pietarsaari/Jakobstad.

### KEY FEATURES

- The Port of Pietarsaari/Jakobstad applies the international ISPS Code



<b>PORT POSITION</b>	N 63°42' 41" E 22° 41' 25" (WGS 84) N 63.7114° E 22.6903°	
<b>SPACING OF BOLLARDS AND FENDERS</b>	South, Buskö and Laukko II every 15 m, Laukko I 18 m and Laukko III every 20 m.	
<b>LOAD OF BOLLARDS</b>	South, Buskö and Laukko II 750 kN (75 t), Laukko I and III 1000 kN (100 t)	
<b>LOAD OF FENDERS</b>	South, Buskö and Laukko II 750 kN (75t) , Laukko I and III 1 000 kN (100 t)	
<b>ELECTRICITY</b>	380 / 220 V 50 Hz, 16A and 32A	
<b>VARIATIONS IN WATER LEVEL</b>	No tidal variations, differences noted are results of weather or climatic conditions. Water levels are reported relatively to the theoretical mean water.	
	MAX	+ 139 cm
	MHW	+ 89 cm
	MLW	- 70 cm
	MIN	- 113 cm
<b>ICE CLASS DESIGNATIONS</b>	IAS	extremely difficult ice conditions
	IA	difficult ice conditions
	IB	moderately difficult ice conditions
	IC	light ice conditions
	II	very light ice conditions
<b>TYPICAL RESTRICTIONS TO NAVIGATION AND TONNAGE SIZE</b>	Starting date	
	At least class / least dwt	Pietarsaari / Jakobstad
	I, II 2000	14 January
	IA, IB 2000 / IC, II 3000	27 January
	IA, IB 2000	10 February
	IA 2000	12 February
	IA 4000	3 March
	IA 2000	30 April
	IA, IB 2000	2 May

# 10 LOCATION

- 1 Port Authority
- 2 Port Operator
- 3 Cement (100 m / 7.4 m)
- 4 South (165 m / 7.4 m)
- 5 Buskö (160 m / 7.4 m + Ro-Ro 22.5 m)
- 6 Laukko I (152 m / 11 m + Ro-Ro 29 m)
- 7 Laukko II (150 m / 11 m)
- 8 Laukko III (200 m / 11 m)

Heights of berths are 2.30 m (average sea level).

All berths are equipped with electricity, water and safety facilities.

Open throughout the year.

Complete access control system at the main gate of the closed harbour area.



## IDEALLY SITUATED

According to the existing land, air and sea network, the location of the port of Pietarsaari/Jakobstad is ideal.

On the east side of the city of Pietarsaari/Jakobstad runs highway 8 along the whole west coastline of Finland. During the last few years, the road and street network of the city of Pietarsaari/Jakobstad has been under development and most of the heavy transportation has moved further from the city centre.

The road network has also been developed according to the need of the local forest industry which is also responsible for having such a good railway network.

## PIETARSAARI/JAKOBSTAD CHANNEL

Maximum draught 11.0 m, safe clearance depth in the outer channel: 13.1 m, in the inner channel: 12.8 m. In the harbour area, at Laukko quay, 12.3/11.7 m and 8.2 m on Buskö, South and Cement quays. Minimum width 120 m. Designated speed in the outer channel: 11.5 knots, in the inner channel: 9.5 knots. Three lines in the channel, one in the harbour, all marked with boards. Lateral marks are lit.

The outer channel from Kallan to Mäskär is open and unsheltered from N-W-E winds. The inner channel, a stretch of 1.6 km, has been dredged and forms a 120 m wide canal. No heavy swell is created but due to the narrowness of the channel winds and suction, may have an impact on the handling of the vessel.

The area is normally ice-covered from the end of December to the beginning of May. During ice formation, winds and currents may create a heavy brash ice barrier between Pietarsaari Lighthouse and Mäskär. Later on ice ridges may occur off Pietarsaari Lighthouse. Ice movement may cause buoys to be pressed beneath the surface over the whole length of the channel.

Wind recommendations are max 10 m/s for in-bound vessels of more than 150 m in length and 15 m/s for outbound vessels of the same size. Wind gauges from Tankar and Kallan Pilot Stations.

The fairway card can be downloaded from: [www.portofpietarsaari.fi/en/port-area/fairways](http://www.portofpietarsaari.fi/en/port-area/fairways)

## KEY FEATURES

- Excellent road and rail network to meet needs of paper industry
- Heavy transportation bypasses city centre
- Maximum draft 11.0 m

## PORT OF PIETARSAARI LTD JAKOBSTADS HAMN AB PIETARSAAREN SATAMA OY

### Port Authority

Alholmintie 76  
68600 PIETARSAARI-JAKOBSTAD  
FINLAND  
Tel. +358 6 723 6128  
www.portofpietarsaari.fi  
www.portofjakobstad.fi  
office@portofpietarsaari.fi

### Managing Director

Juha Hakala  
Tel. +358 40 585 2332  
juha.hakala@portofpietarsaari.fi

### Technical Manager

Johanna Heinoja  
Tel. +358 40 508 1906  
johanna.heinoja@portofpietarsaari.fi

### Port Control 24/7/365

Tel. +358 6 723 1388  
portcontrol@portofpietarsaari.fi

## EUROPORTS PIETARSAARI OY AB

### Port Operator

Alholmintie 80  
PO Box 50  
68600 PIETARSAARI-JAKOBSTAD  
FINLAND  
Fax. +358 6 724 3240  
firstname.surname@euroports.fi

### Operative Director

Pauli Rautiainen  
Tel. +358 6 781 3612, +358 40 585 2603

### Agency Manager

Mats Furu  
Tel. +358 6 781 3616, +358 40 766 8042  
Agency 24 h Tel. +358 40 585 2420

### Forwarding Manager

Michael Blomström  
Tel. +358 6 781 3627, +358 50 581 4990

### Operations Manager

Tony Hanner  
Tel. +358 40 196 5168

## KRAFTLINE OY AB

### Tugs

Alholmintie 76  
68600 PIETARSAARI-JAKOBSTAD  
FINLAND  
Tel. +358 40 501 4135  
24h +358 40 557 5692 Simson, Bock

www.kraftline.fi

henry.hermanson@kraftline.fi

## FINSEMENTTI OY

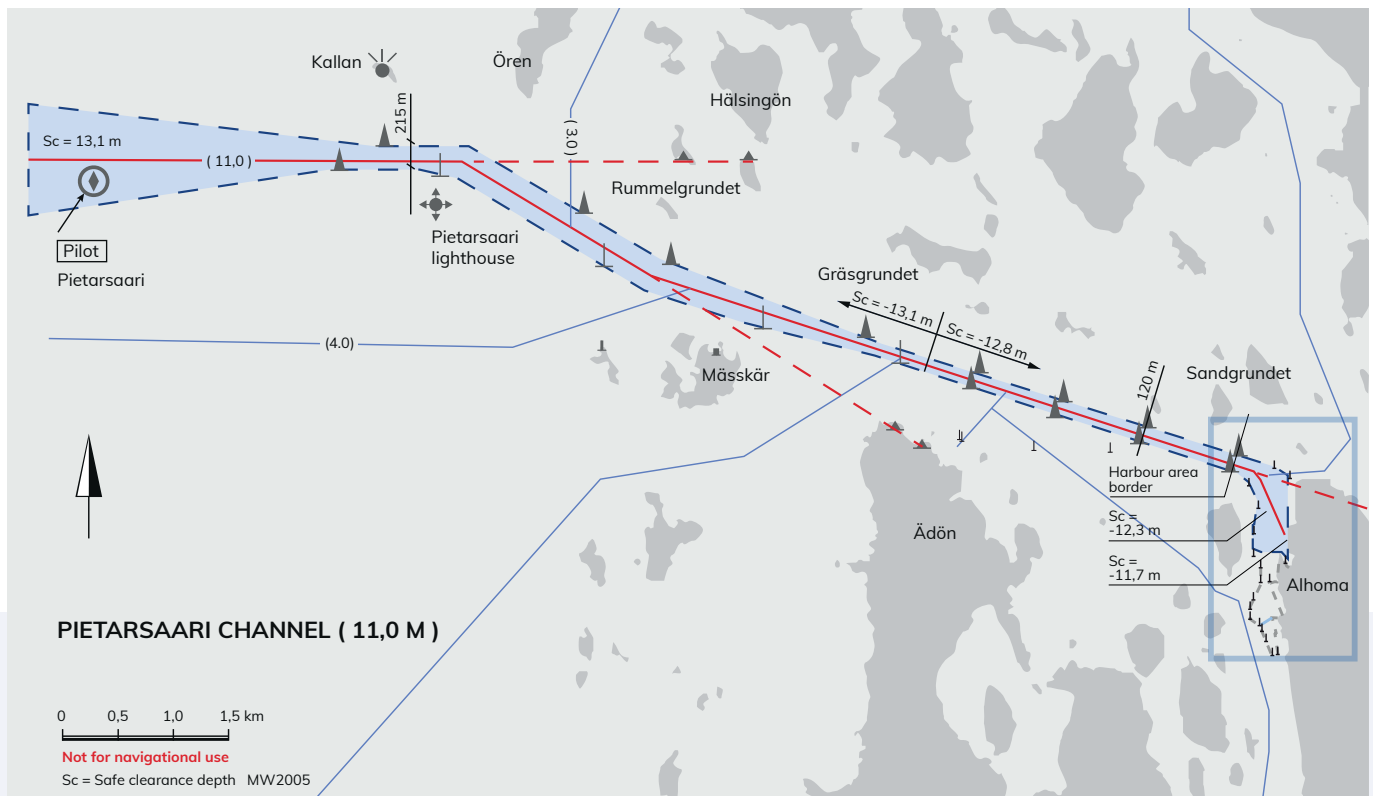
Alholmintie 74  
68600 PIETARSAARI-JAKOBSTAD  
FINLAND  
Tel. +358 20 120 6254  
www.finnsementti.fi

## UPM-KYMMENE OYJ

Luodontie 149  
68600 PIETARSAARI-JAKOBSTAD  
FINLAND  
Tel. +358 2041 6113  
www.upm-kymmene.com

## WIBAX PIETARSAARI TERMINAL

Laukontie 5  
68600 PIETARSAARI-JAKOBSTAD  
FINLAND  
Tel. +358 6 723 1876, +358 400 195 922  
terminal.jakobstad@wibax.com  
www.wibax.com







## **AT YOUR SERVICE**

### **PORT OF PIETARSAARI/JAKOBSTAD**

Alholmintie 76  
FIN 68600 PIETARSAARI-JAKOBSTAD  
FINLAND

Tel. +358 6 723 6128

[www.portofpietarsaari.fi](http://www.portofpietarsaari.fi)  
[www.portofjakobstad.fi](http://www.portofjakobstad.fi)  
[office@portofpietarsaari.fi](mailto:office@portofpietarsaari.fi)